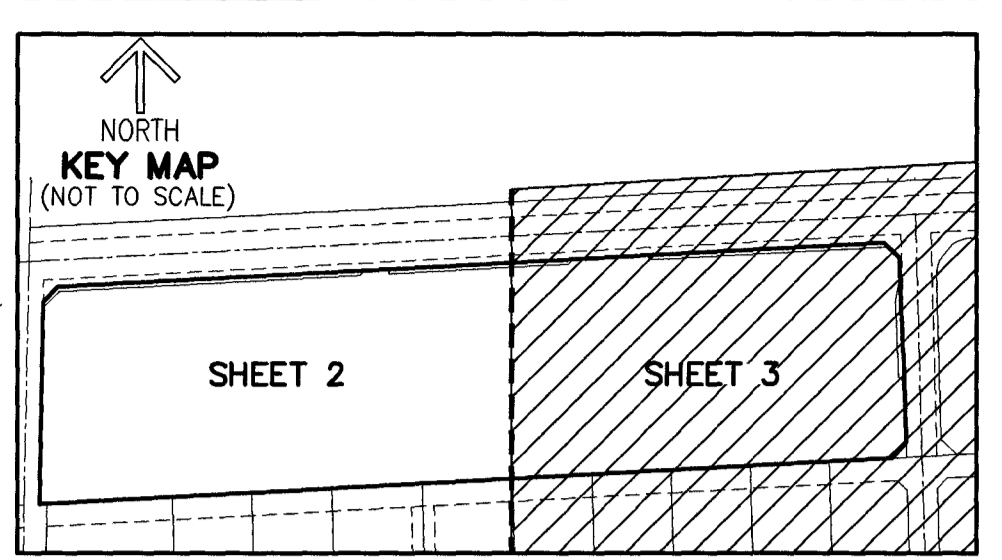


THIS INSTRUMENT PREPARED BY
DAVID P. LINDLEY
OF
CAULFIELD & WHEELER, INC.
SURVEYORS - ENGINEERS - PLANNERS
7900 GLADES ROAD, SUITE 100
BOCA RATON, FLORIDA 33434 - (561)392-1991
CERTIFICATE OF AUTHORIZATION NO. LB3591

COCONUT CROSSING

BEING A PORTION OF THE SOUTHWEST ONE-QUARTER OF
SECTION 15, TOWNSHIP 42 SOUTH, RANGE 41 EAST,
CITY OF PALM BEACH GARDENS, PALM BEACH COUNTY, FLORIDA.

NOTES
COORDINATES, BEARINGS AND DISTANCES
COORDINATES SHOWN ARE GRID
DATUM = NAD 83 (1990 ADJUSTMENT)
ZONE = FLORIDA EAST
LINEAR UNIT = US SURVEY FEET
COORDINATE SYSTEM 1983, STATE PLANE
TRANSVERSE MERCATOR PROJECTION
ALL DISTANCES ARE GROUND, UNLESS OTHERWISE NOTED
SCALE FACTOR = 1.0000108
GROUND DISTANCE X SCALE FACTOR = GRID DISTANCE
BEARINGS AS SHOWN HEREON ARE GRID DATUM,
NAD 83 (1990 ADJUSTMENT), FLORIDA EAST ZONE.

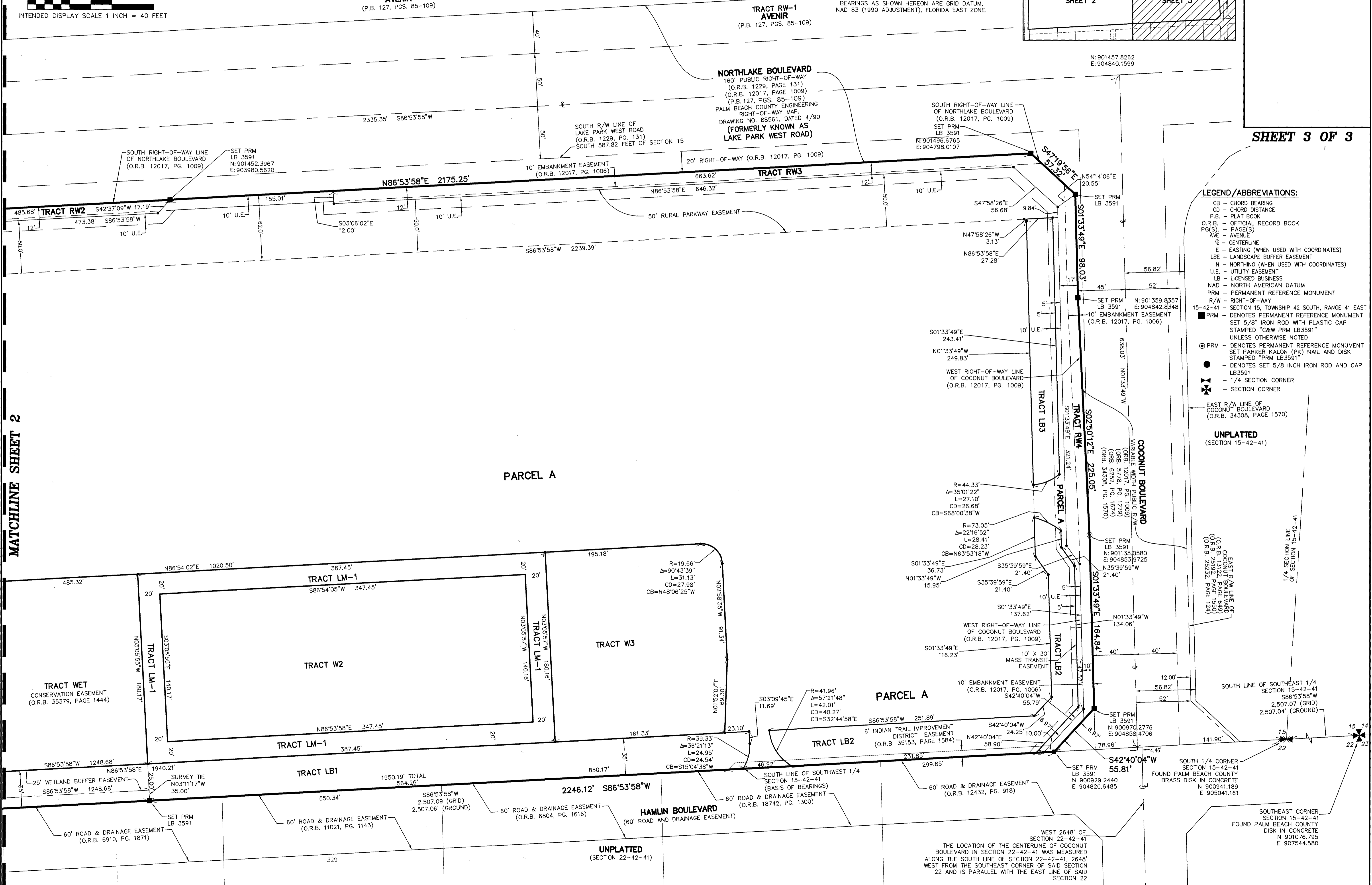


171

SHEET 3 OF 3

- LEGEND/ABBREVIATIONS:**
- CB - CHORD BEARING
 - CD - CHORD DISTANCE
 - P.B. - PLAT BOOK
 - O.R.B. - OFFICIAL RECORD BOOK
 - PG(S) - PAGE(S)
 - AVE - AVENUE
 - E - CENTERLINE
 - E - EASTING (WHEN USED WITH COORDINATES)
 - LBE - LANDSCAPE BUFFER EASEMENT
 - N - NORTHING (WHEN USED WITH COORDINATES)
 - U.E. - UTILITY EASEMENT
 - LB - LICENSED BUSINESS
 - NAD - NORTH AMERICAN DATUM
 - PRM - PERMANENT REFERENCE MONUMENT
 - R/W - RIGHT-OF-WAY
 - 15-42-41 - SECTION 15, TOWNSHIP 42 SOUTH, RANGE 41 EAST
 - PRM - DENOTES PERMANENT REFERENCE MONUMENT SET 5/8" IRON ROD WITH PLASTIC CAP STAMPED "C&W PRM LB3591" UNLESS OTHERWISE NOTED
 - ⊙ PRM - DENOTES PERMANENT REFERENCE MONUMENT SET PARKER KALON (PK) NAIL AND DISK STAMPED "PRM LB3591"
 - - DENOTES SET 5/8 INCH IRON ROD AND CAP LB3591
 - ⊕ - 1/4 SECTION CORNER
 - ⊗ - SECTION CORNER

UNPLATTED
(SECTION 15-42-41)



MATCHLINE SHEET 2

1/4 SECTION LINE OF SECTION 15-42-41

15 14

22 23

SOUTHEAST CORNER SECTION 15-42-41 FOUND PALM BEACH COUNTY DISK IN CONCRETE N 901076.795 E 907544.580

WEST 2648' OF SECTION 22-42-41 COCONUT BOULEVARD IN SECTION 22-42-41 WAS MEASURED ALONG THE SOUTH LINE OF SECTION 22-42-41, 2648' WEST FROM THE SOUTHEAST CORNER OF SAID SECTION 22 AND IS PARALLEL WITH THE EAST LINE OF SAID SECTION 22